

Competition Brief

Competition title and level

Advanced Welding

Entry requirements

The competition is intended for students, apprentices studying towards a level 3 Welding qualification.

Competition outline

Stage One: Internal qualifying/ selection process with partner institutions.

Stage Two: Competitors to register online by 20th October 2018

Stage Three: Partner institutions will be informed of their place allocation depending on applications.

Stage Four: Regional Semi-Finals will be held at Coleg Menai, Llangefni, and NPTC, Neath on the 5th December 2018

Stage Five: Top four competitors in each heat will be invited to the Wales Final.

Stage Six: The all Wales Final hosted at Coleg Gwent, Newport on Wednesday the 23rd January 2019.

The detail

The Wales competition will involve welded joints is the following processes.

- MAG Welding
- MMA Welding
- TIG Welding

A range of welding positions will be used including:

- PA
- PB
- PC
- PF

All welds to be visually inspected only

Marking and assessment

Form G

Skills Competitions Wales 2014/2015



Each welded fabrication to be judged against a detailed marking scheme.

Competition rules

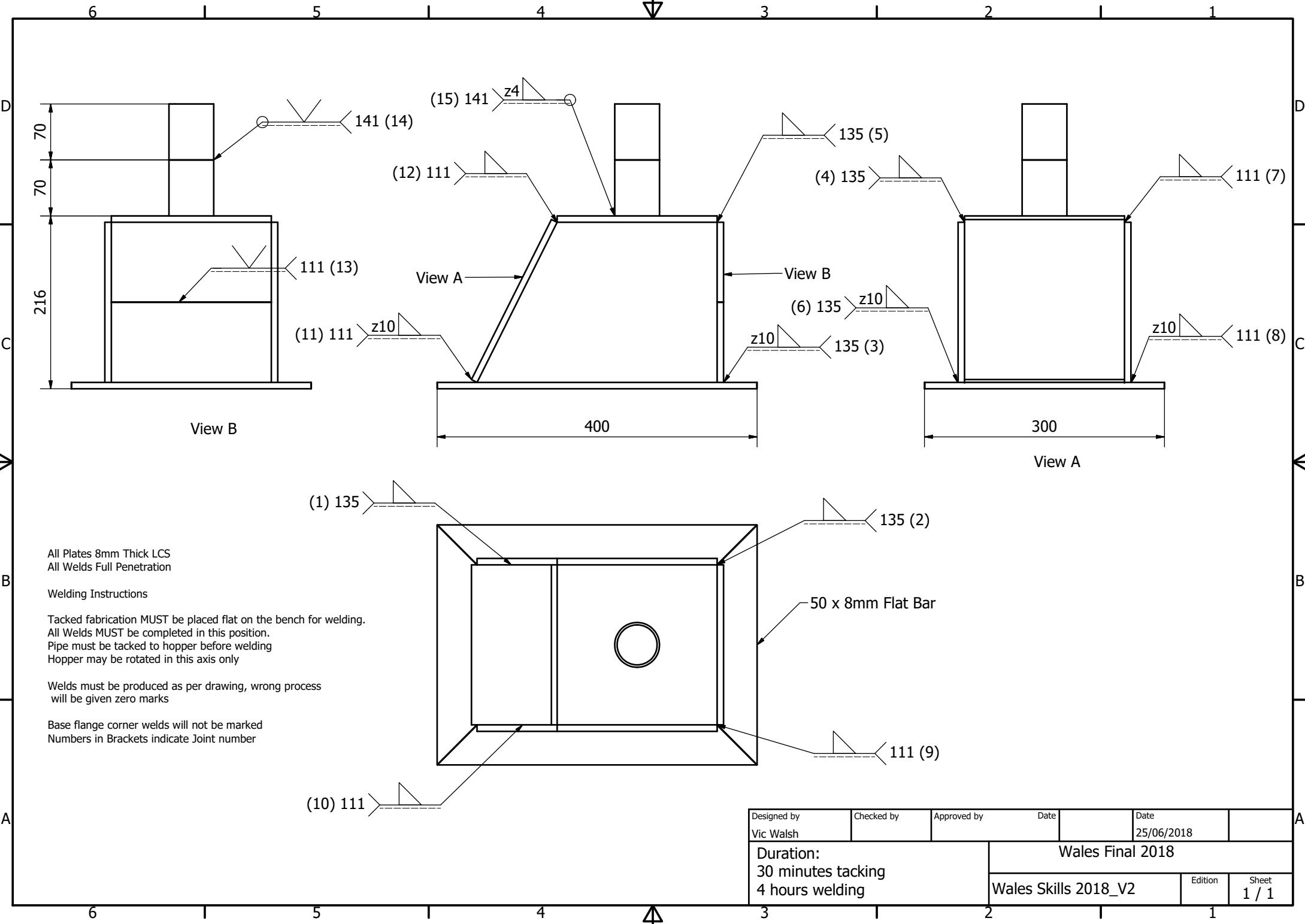
- All competitors will receive a health and safety briefing at the start of the competition and these rules must be adhered to throughout the competition
- Competitors who arrive late for competitions will not normally receive additional time.
- Competitors will start and finish work as instructed by the judges.
- During the competition competitors should not disturb other competitors or speak to members of the public.
- Any competitor who wishes to leave the area during the competition must seek the permission of the judges.
- Competitors will not be allowed contact with tutors/coaches during the live competition. Non-compliance with this may result in deduction of points.
- If there is a power stoppage or accident, the competitors must act according to the instructions of the judges
- Competitors who break or damage equipment during the competition will not receive any additional time.
- Where a competitor is observed working in an unsafe manner they will be stopped and not permitted to continue unless willing to follow the judges' directions.
- The competition will be assessed and marked by a panel of judges (from industry, colleges or training providers) using the competition criteria and allocation of marks.

Contact details

Vic Walsh
Coleg Cambria
Kelsterton Road
Connah's Quay
Deeside
CH5 4BR

01978 267356

victor.walsh@cambria.ac.uk



All Plates 8mm Thick LCS
 All Welds Full Penetration

Welding Instructions

Tacked fabrication **MUST** be placed flat on the bench for welding.
 All Welds **MUST** be completed in this position.
 Pipe must be tacked to hopper before welding
 Hopper may be rotated in this axis only

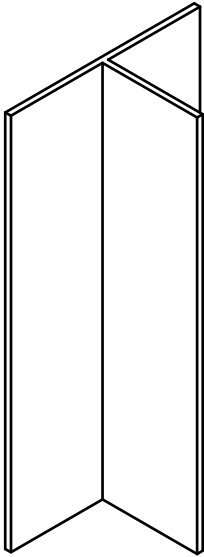
Welds must be produced as per drawing, wrong process
 will be given zero marks

Base flange corner welds will not be marked
 Numbers in Brackets indicate Joint number

Designed by Vic Walsh	Checked by	Approved by	Date	Date 25/06/2018	
Duration: 30 minutes tacking 4 hours welding			Wales Final 2018		
			Wales Skills 2018_V2	Edition	Sheet 1 / 1

6 5 4 3 2 1

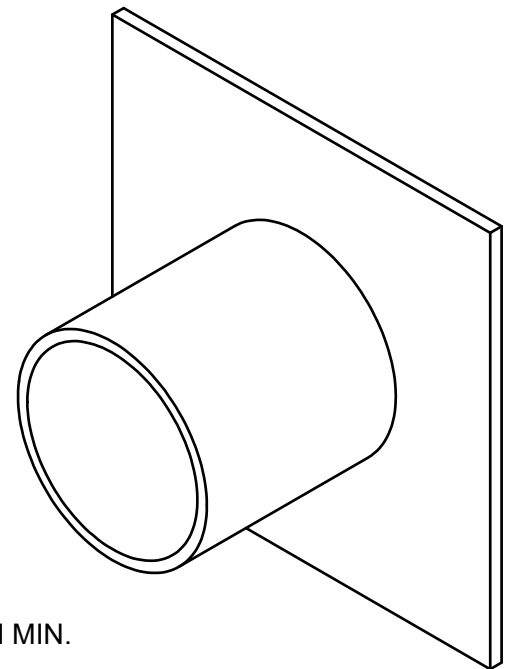
D



Process - TIG
Position - PF (Vertical Up)
Material - LCS 3mm Thick
Leg Length - Z3
Tolerance - +2mm , - 0mm
Dimensions -
2 off - 200mm x 100mm

Stop/Start Required at Centre of Joint

No Stop/Start Required
Position Fixed - DO NOT ROTATE



Process - MAG
Position - PF (Vertical Up)
Material - LCS 6mm Thick
Leg Length - Z10 -
Tolerance - +2mm , - 0mm
Dimensions -
1 off - 200mm x 200mm
1 off - 100mm DIA Pipe 5mm Wall MIN.

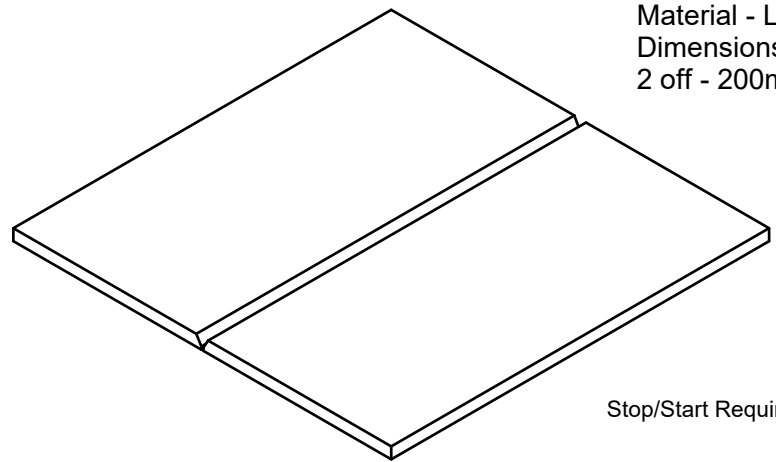
D

C

C

B

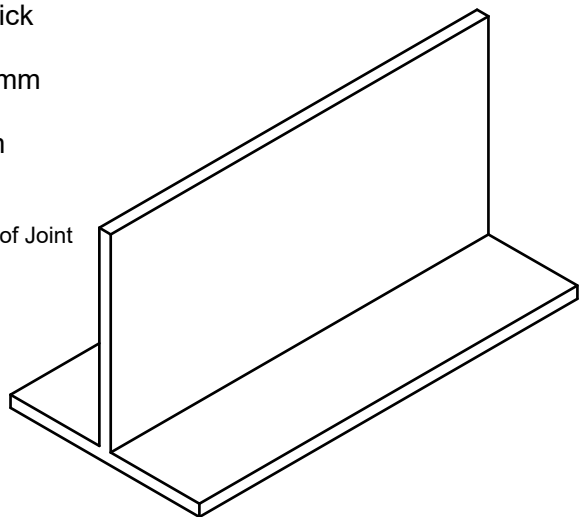
Process - MMA
Position - PA (Flat)
Material - LCS 6mm Thick
Dimensions -
2 off - 200mm x 100mm



Stop/Start Required at Centre of Joint

Process - MMA
Position - PB (H/V)
Material - LCS 6mm Thick
Leg Length - Z10
Tolerance - +2mm , - 0mm
Dimensions -
2 off - 200mm x 100mm

Stop/Start Required at Centre of Joint



B

A

A

6 5 4 3 2 1

Briff y Gystadleuaeth

Teitl a lefel y gystadleuaeth

Weldio Lefel Uwch

Gofynion mynediad

Mae'r gystadleuaeth hon ar gyfer myfyrwyr, prentisiaid sy'n astudio tuag at gymhwyster Weldio lefel 3.

Amlinelliad o'r gystadleuaeth

Cam Un: Cymhwyso yn fewnol / proses ddethol gyda'r sefydliad partner.

Cam Dau: Cystadleuwyr i gofrestru ar-lein erbyn 20 Hydref 2018

Cam Tri: Bydd y sefydliadau partner yn cael eu hysbysu am lwyddiant y cais yn ddibynnol ar y ceisiadau eraill.

Cam Pedwar: Bydd rowndiau Cynderfynol rhanbarthol yn cael eu cynnal yng Ngholeg Menai, Llangefni, a NPTC, Castell-nedd ar y 5 Rhagfyr 2018.

Cam Pump: Bydd y pedwar uchaf ymhob rownd yn cael eu gwahodd i Rownd Derfynol Cymru.

Cam Chwech: Cynhelir Rownd Derfynol Cymru yng Ngholeg Gwent, Casnewydd dydd Mercher, 23 Ionawr 2019

Y manylyn

Bydd cystadleuaeth Cymru yn cynnwys uniadau weldio (welded joints) yn y prosesau a ganlyn.

- Weldio MAG
- Weldio MMA
- Weldio TIG

Bydd defnydd o amrywiaeth o safleoedd weldio gan gynnwys:

- PA
- PB
- PC
- PF

Bydd pob weldio'n cael ei archwilio'n weledol yn unig..

Marcio ac asesu

Bydd pob ffabrig fydd wedi ei weldio yn cael ei feirniadu yn ôl cynllun marcio manwl.

Rheolau'r gystadleuaeth

- Bydd yr holl gystadleuwyr yn cael briff iechyd a diogelwch ar gychwyn y gystadleuaeth a rhaid cadw at y rheolau hyn drwy gydol y gystadleuaeth.
- Ni fydd cystadleuwyr sy'n cyrraedd yn hwyr yn cael amser ychwanegol fel arfer.
- Bydd y cystadleuwyr yn cychwyn a gorffen ar orchymyn y beirniaid.
- Yn ystod y gystadleuaeth ni ddylai'r cystadleuwyr darfu ar gystadleuwyr eraill ac ni ddylent siarad gydag aelodau o'r cyhoedd.
- Os bydd unrhyw gystadleuydd angen gadael ardal y cystadlu yn ystod y gystadleuaeth rhaid iddynt gael caniatâd gan y beirniaid.
- Nid oes caniatâd i gystadleuwyr gysylltu hefo'u tiwtor/ hyfforddwr yn ystod y gystadleuaeth. Mae methiant i gydymffurfio â hyn yn gallu arwain at golli marciau.
- Os bydd yna doriad yn y pŵer neu ddamwain, rhaid i'r cystadleuwyr ddilyn cyfarwyddyd y beirniaid.
- Os fydd cystadleuydd yn torri neu niweidio offer yn ystod y gystadleuaeth ni fyddant yn cael amser ychwanegol.
- Os fydd y beirniaid yn teimlo fod cystadleuydd yn gweithio mewn ffordd beryglus gallant ei stopio ac ni fydd yn cael parhau os nad yw'n fodlon dilyn cyfarwyddyd y beirniad.
- Bydd y gystadleuaeth yn cael ei hasesu a'i marcio gan banel o feirniaid (o fyd diwydiant, o golegau neu hyfforddwyr) gan ddefnyddio meini prawf y gystadleuaeth a'r dyraniad o farciau.

Manylion cyswllt

Vic Walsh
Coleg Cambria
Ffordd Kelsterton
Cei Connah
Glannau Dyfrdwy
CH5 4BR

01978 267356

victor.walsh@cambria.ac.uk

Cystadleuaeth | Skills
Sgiliau | Competition
Cymru | Wales



Ffurflen G
Cystadlaethau
Sgiliau Cymru
2018/2019



Cystadleuaeth | **Skills**
Sgiliau | Competition
Cymru | Wales

