

ITEM NO.	PART NUMBER	QTY.
1	WALES SKILLS ROCKET STOVE	1
2	WS ROCKET STOVE BASE RIB	2
3	WS ROCKET STOVE BASE PINS	3
4	WALES SKILLS ROCKET STOVE TOP PIECE	1
5	BS EN 24032 - M8 - D - N	4
6	BS EN 24014 - M8 x 40 x 40-N	4
7	WALES SKILLS ROCKET STOVE HINGE PLATE	4
8	WALES SKILLS ROCKET STOVE DOOR	2
9	WALES SKILLS DOOR SLIDE	2
10	WALES SKILLS ROCKET STOVE SLIDE DOOR STOP	1
11	WALES SKILLS ROCKET STOVE SLIDE DOOR	1

Notes:

Body and Base Assembly need to be handed in with fixing screws LOOSE. This is to ensure fitment is correct.

Stove Top to be a 'Snug' Fit.

Process: Assembly.

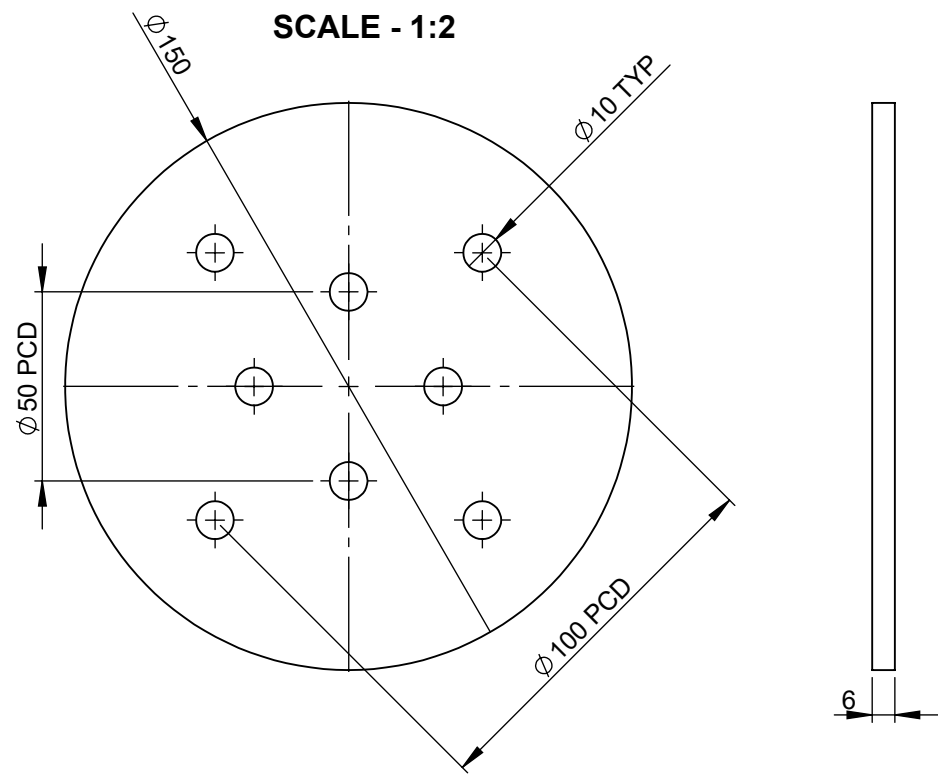
Material: Low Carbon Steel.

Finish: Strictly NO GRIND MARKS

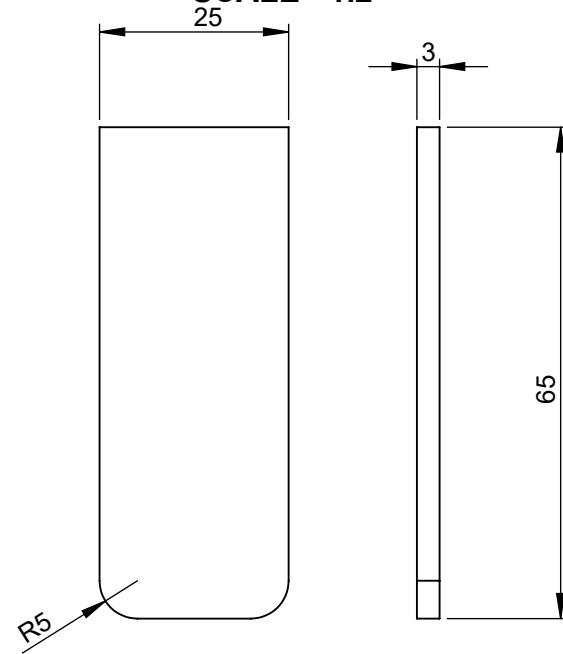
	Tolerances Unless stated otherwise Linear: $\pm 0.25\text{mm}$ Angular: $\pm 0.05^\circ$	Title: WS-CMW-ROCKET STOVE			
		Drawing No: WC-CMW-RS-GA1			
		Drawn: GFP	Checked: AC		
		Date: 07/06/2023	Status: Released.		
		Scale: 1:4	Sheet Size: A3	Rev: A	Sheet No.: 1/4

All dimensions in millimetres
Do not scale

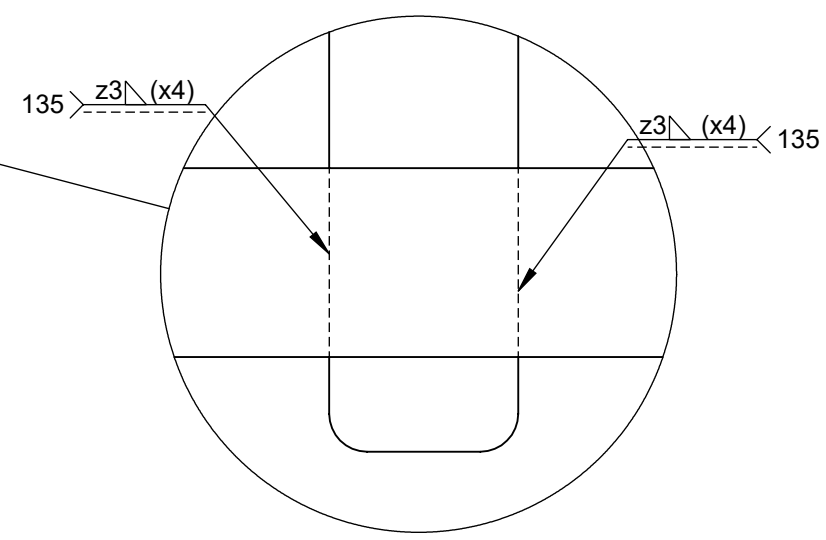
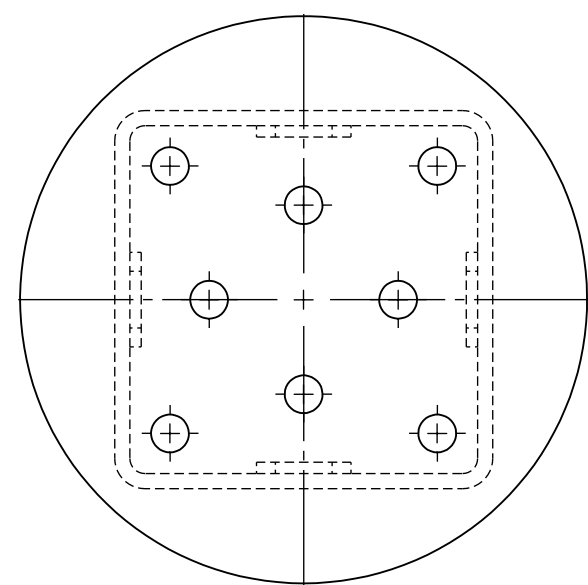
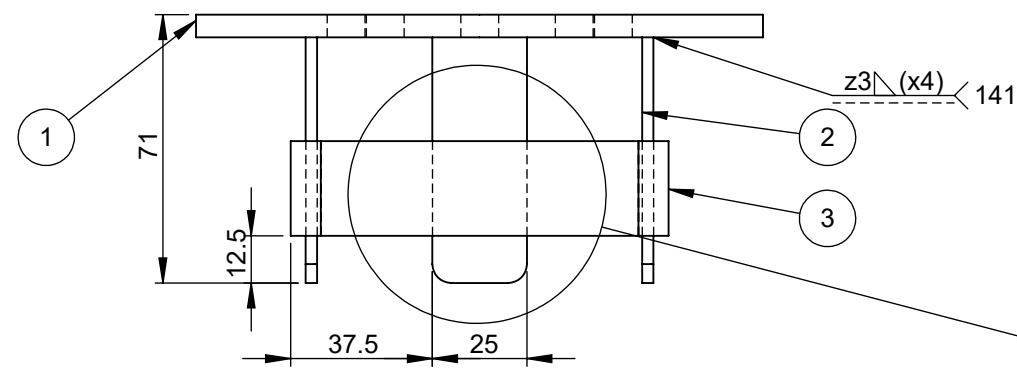
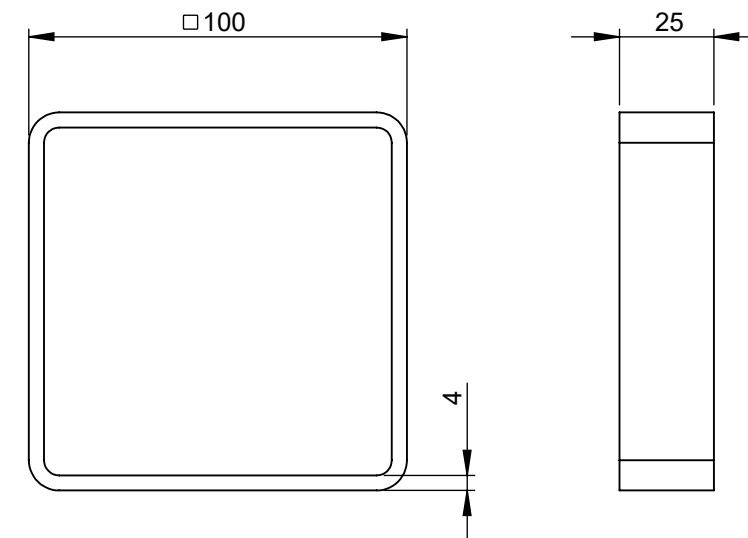
**STOVE TOP DISK
SCALE - 1:2**



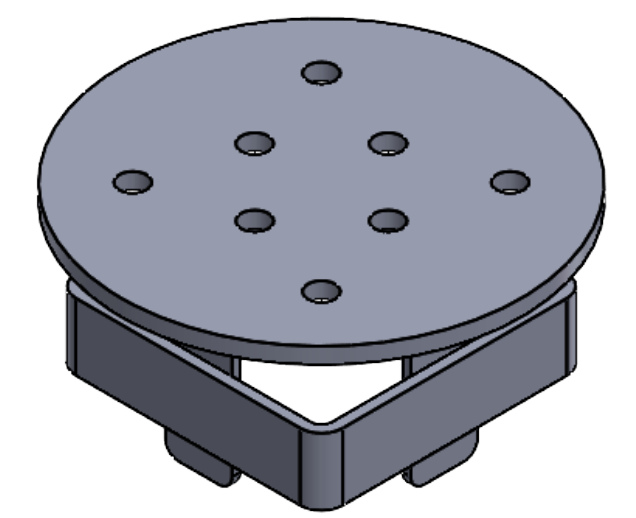
**STOVE RIB
SCALE - 1:2**



**STOVE TOP BODY
SCALE - 1:4**



**DETAIL C
SCALE 1 : 1**



Notes:
 Disc to be FLAME CUT BY HAND ONLY.
 Process: Profiling and Fabrication.
 Material: Low Carbon Steel.
 Finish: Strictly NO GRIND MARKS

Part Number	Title	Quantity
1	Stove Top Disk	1
2	Stove Rib	4
3	Stove Top Body	1

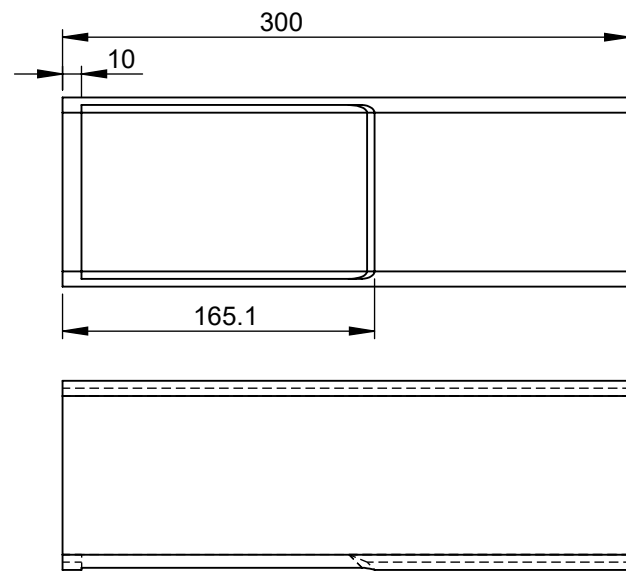


**Tolerances
Unless stated otherwise**
 Linear: $\pm 0.25\text{mm}$
 Angular: $\pm 0.05^\circ$

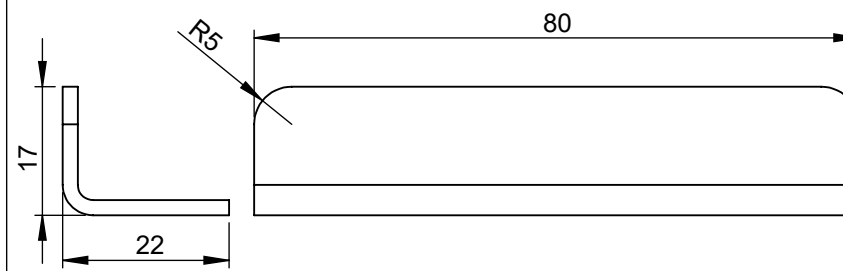
**All dimensions in millimetres
Do not scale**

Title: WS-CMW-ROCKET STOVE			
Drawing No: WC-CMW-RS-ST1			
Drawn: GFP	Checked: AC		
Date: 07/06/2023	Status: Released.		
Scale: 1:4	Sheet Size: A3	Rev: A	Sheet No.: 2/4

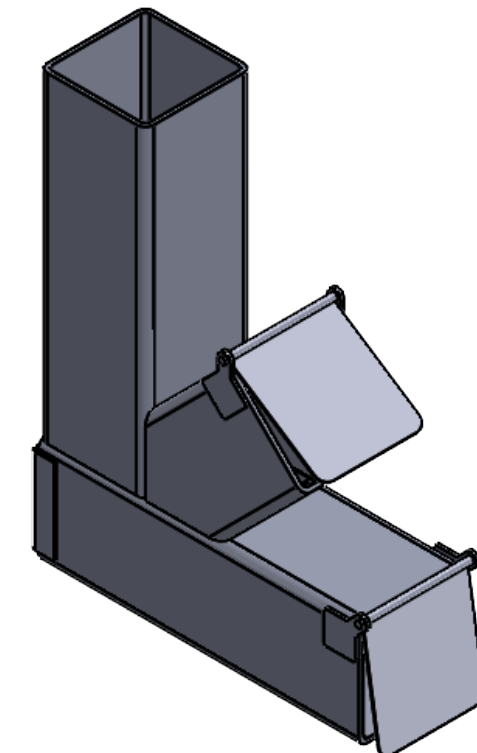
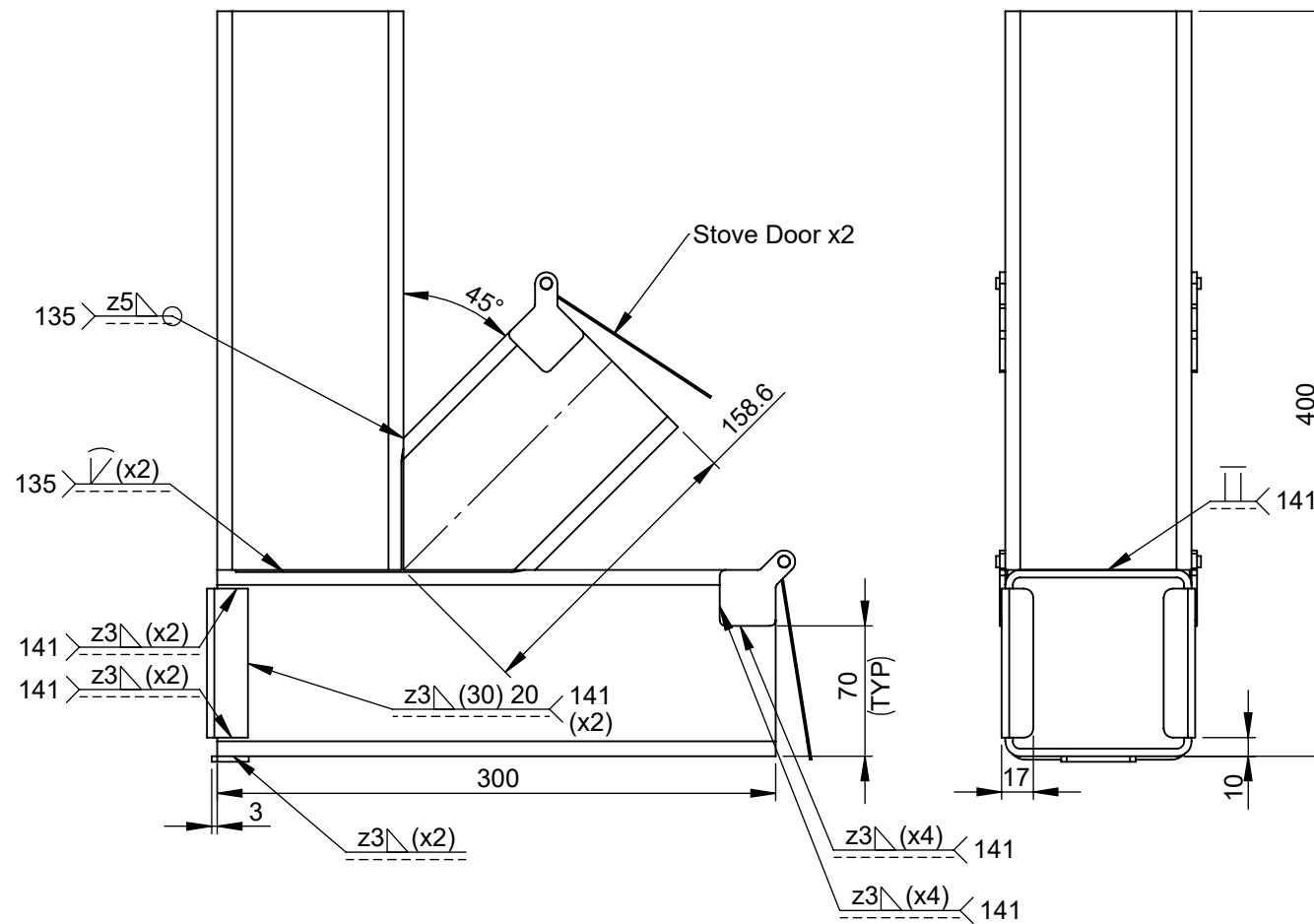
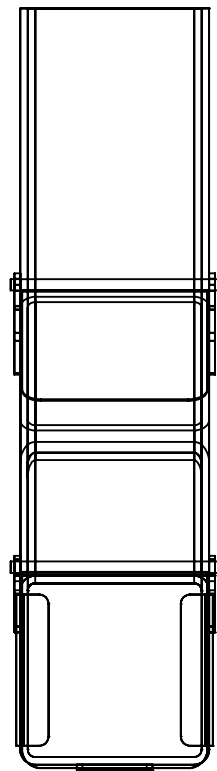
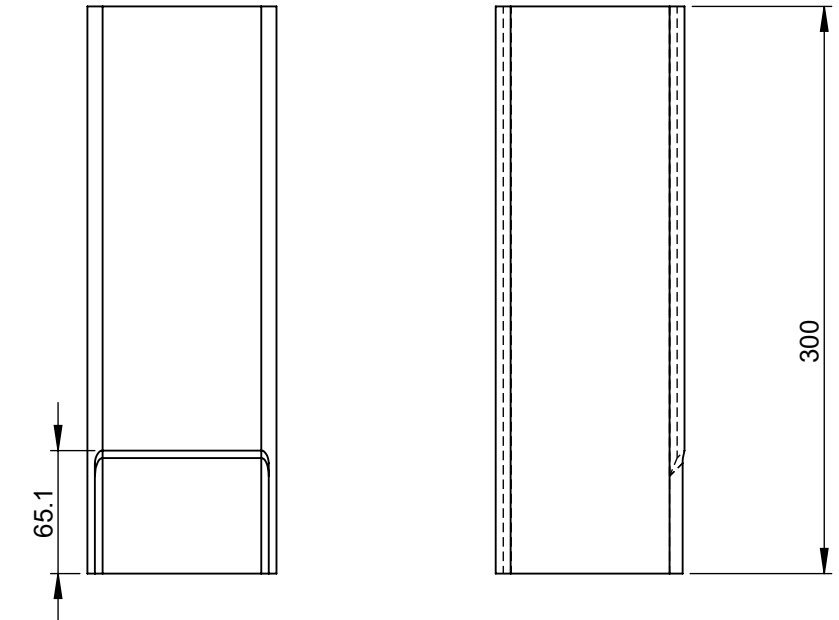
ROCKET STOVE BASE CHAMBER



ROCKET STOVE DOOR SLIDE



ROCKET STOVE FLUE



Notes:

DOORS TO GO ONTO COMPONENT PRIOR TO BOTH HINGES BEING FITTED.

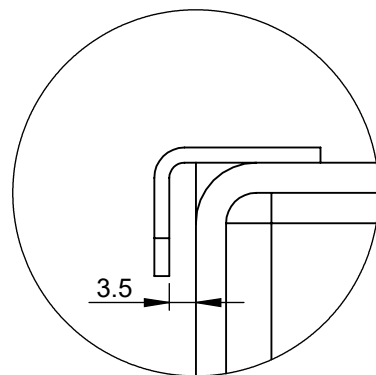
Hinges are supplied.

Curvature of cutout profile does not need to be met. Square corners are acceptable.

Process: Profiling and Fabrication.

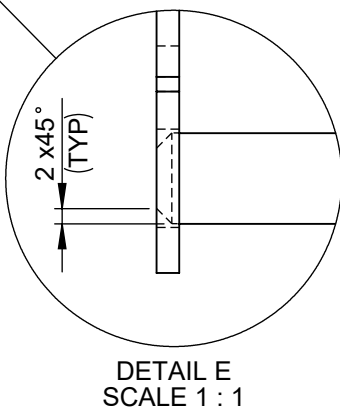
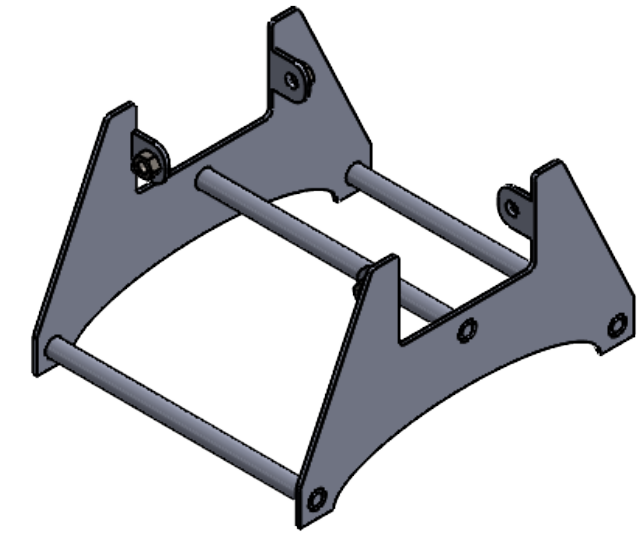
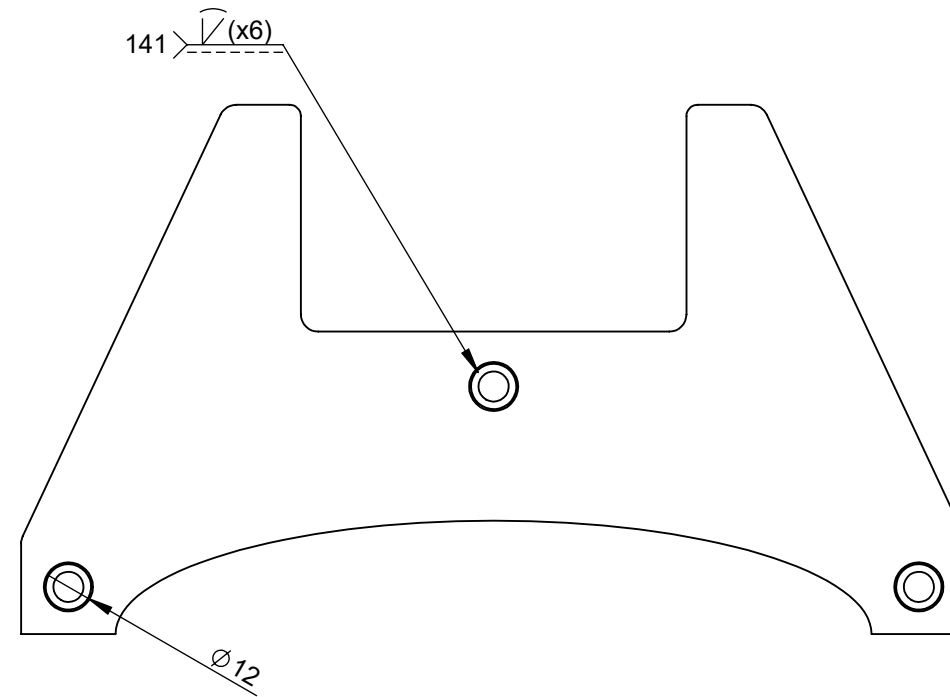
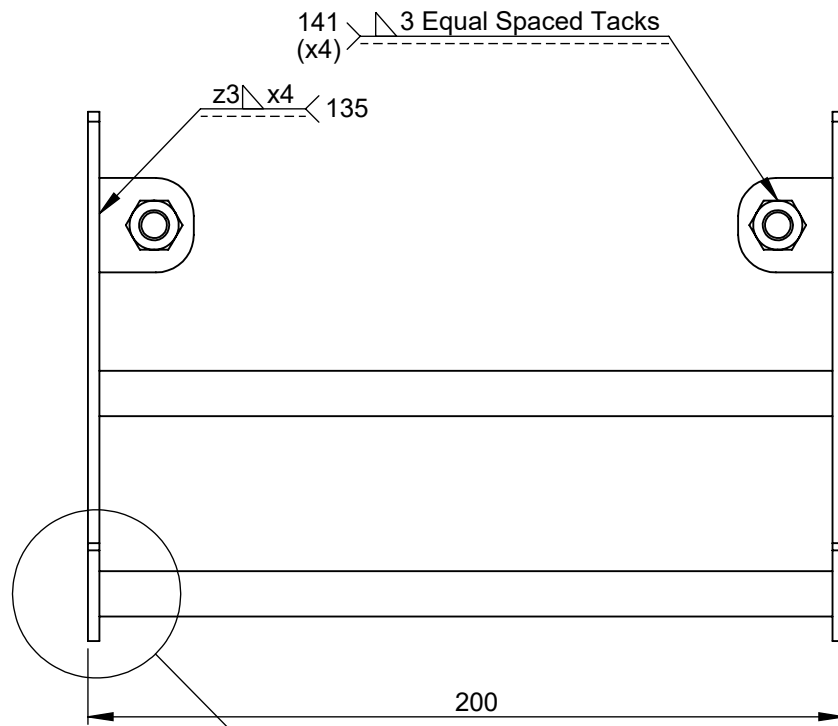
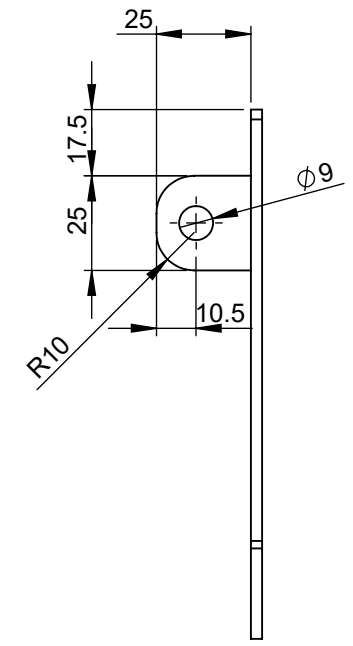
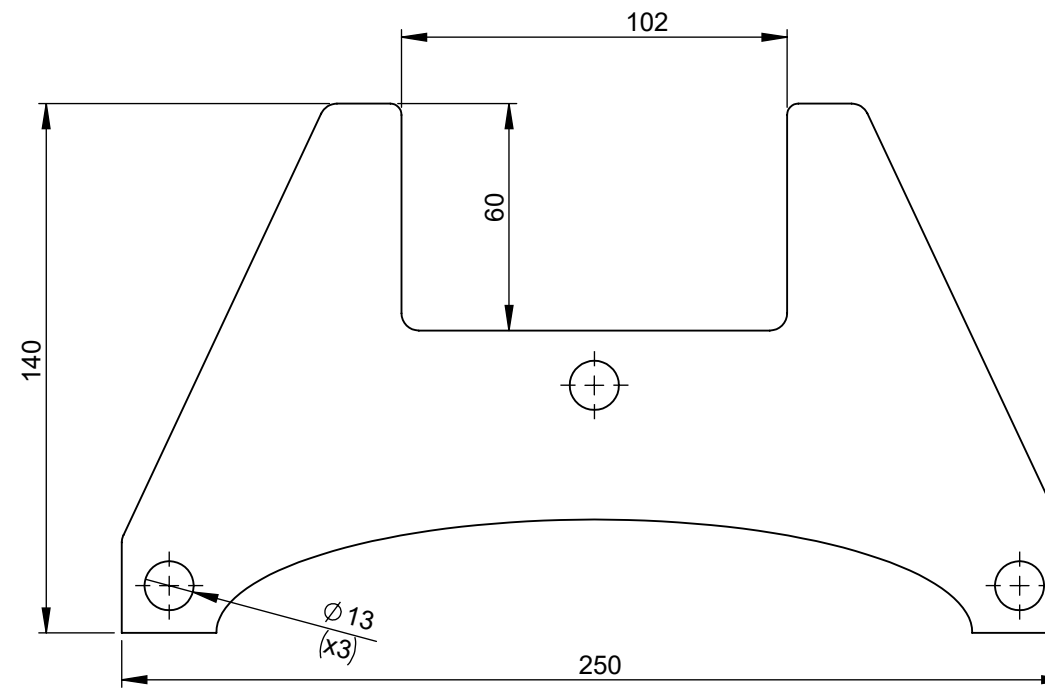
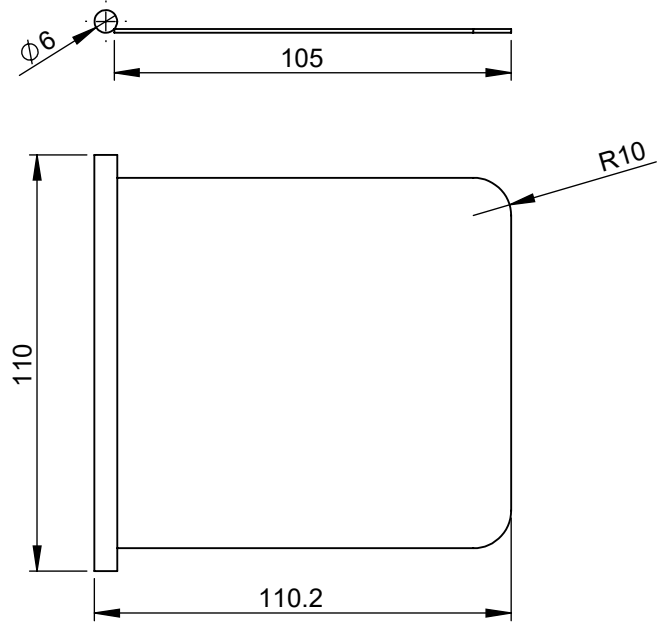
Material: Low Carbon Steel.

Finish: Strictly NO GRIND MARKS



DETAIL D
SCALE 1 : 1

	Tolerances Unless stated otherwise Linear: $\pm 0.25\text{mm}$ Angular: $\pm 0.05^\circ$	Title: WS-CMW-ROCKET STOVE	
		Drawing No: WC-CMW-RS-SB1	Drawn: GFP Checked: AC
All dimensions in millimetres Do not scale		Date: 07/06/2023	Status: Released.
Scale 1:4	Sheet Size A3	Rev A	Sheet No. 3/4



Notes:
 Part to be FLAT AND SQUARE after Welding.
 Nuts to be TACKED on in 3 equal spaced places.
 DO NOT WELD INTERNAL BUTT for the Tabs.
 Process: Profiling and Fabrication.
 Material: Low Carbon Steel.
 Finish: Strictly NO GRIND MARKS

	Tolerances Unless stated otherwise Linear: $\pm 0.25\text{mm}$ Angular: $\pm 0.05^\circ$	Title: WS-CMW-ROCKET STOVE	
		Linear: $\pm 0.25\text{mm}$ Angular: $\pm 0.05^\circ$	Drawing No: WC-CMW-RS-SB1
All dimensions in millimetres Do not scale		Drawn: GFP Date: 07/06/2023	Checked: AC Status: Released.
Scale 1:4	Sheet Size A3	Rev A	Sheet No. 4/4